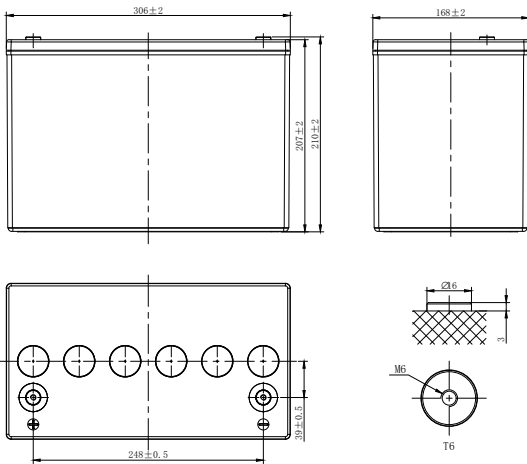
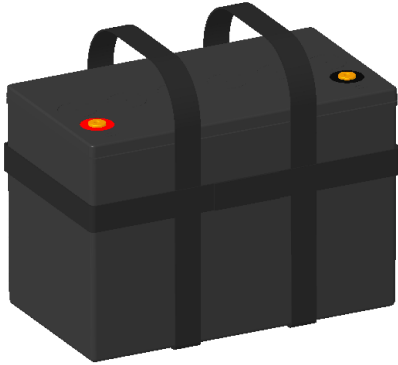


HXP SERIES-ULTRA HIGH RATE

HXP12-350 (12V350W)



CHARACTERISTICS

Item	Specifications	
Rated Voltage	12V	
Nominal Rate (25°C)	$W_{15}, 1.67V/cell$	376.5W/cell
Nominal Capacity (25°C)	$C_{10}, 1.80V/cell$	90Ah
Dimension	Length	306mm (12.0inches)
	Width	168mm (6.61inches)
	Container Height	207mm (8.15inches)
	Total Height	210mm (8.27inches)
Approx Weight	30.1kg (66.4lbs)	
Terminal	T6(M6)	
Container Material	ABS (UL94 HB or V-0 optional)	
Short-circuit current	1980.0A	
Internal Resistance (25°C)	Approx 4.0 mΩ (Fully charged)	
Operating Temp. Range	Discharge	-15~50°C (5~122°F)
	Charge	-20~40°C (-4~104°F)
	Storage	-15~40°C (5~104°F)
Nominal Operating Temp. Range	25±3°C (77±5°F)	
Max.Charging Current (25°C)	0.25C	
Charge voltage (25°C)	Standby Use	Equalization Use
	2.25-2.30V/cell	2.30-2.40V/cell
Temp. Coefficient	-3mV/cell/°C	-4mV/cell/°C
	40°C (104°F)	106%
Effect of temp. to Capacity	25°C (77°F)	100%
	0°C (32°F)	86%
	Self Discharge	≤3% per month at 25°C (77°F)

DISCHARGE TABLE

Constant Current Discharge (Amperes) at 25°C (77°F)															
F.V/Time	5min	10min	15min	20min	30min	45min	1h	2h	3h	4h	5h	6h	8h	10h	20h
1.85V/cell	248.4	199.8	162.0	140.4	111.6	78.0	64.8	35.6	26.9	20.9	17.1	14.4	11.0	8.91	4.70
1.80V/cell	275.4	216.0	172.8	148.5	117.0	81.6	67.2	36.5	27.3	21.4	17.3	14.6	11.1	9.00	4.73
1.75V/cell	302.4	232.2	183.6	156.6	122.4	85.2	68.4	37.4	27.8	21.6	17.5	14.7	11.3	9.27	4.86
1.70V/cell	329.4	248.4	194.4	164.7	127.8	87.6	69.3	38.3	28.1	21.8	17.6	14.9	11.5	9.45	4.95
1.67V/cell	356.4	264.6	205.2	172.8	129.6	90.0	70.2	39.2	28.5	22.1	17.8	15.1	11.7	9.63	5.04
1.60V/cell	383.4	277.6	216.0	175.5	133.2	92.4	72.0	40.1	28.8	22.3	18.0	15.3	11.9	9.81	5.18

Constant Power Discharge (Watts/cell) at 25°C (77°F)															
F.V/Time	5min	10min	15min	20min	30min	45min	1h	2h	3h	4h	5h	6h	8h	10h	20h
1.85V/cell	468.6	364.9	308.3	275.3	212.2	171.1	130.2	73.5	53.8	40.8	34.4	29.1	22.0	18.3	9.59
1.80V/cell	494.2	392.9	325.7	288.1	219.3	174.3	131.1	75.0	54.3	41.2	34.7	29.5	22.3	18.6	9.78
1.75V/cell	555.6	422.5	342.5	306.6	231.7	178.5	135.0	76.4	55.3	41.5	35.0	29.5	22.7	18.9	9.93
1.70V/cell	612.2	451.3	358.8	314.1	237.9	180.2	136.5	77.0	55.7	41.9	35.2	29.8	23.1	19.1	10.0
1.67V/cell	657.8	482.6	376.5	316.5	239.4	182.1	137.6	77.7	56.0	42.5	35.6	30.3	23.3	19.3	10.2
1.60V/cell	705.9	504.0	389.8	318.9	241.3	184.2	138.7	78.0	56.3	42.5	35.6	30.6	23.7	19.4	10.3

Constant Current Discharge (Amperes) at 20°C (68°F)															
F.V/Time	5min	10min	15min	20min	30min	45min	1h	2h	3h	4h	5h	6h	8h	10h	20h
1.85V/cell	236.6	190.3	154.3	133.7	106.3	74.3	61.7	34.6	26.1	20.3	16.6	14.0	10.5	8.65	4.56
1.80V/cell	262.3	205.7	164.6	141.4	111.4	77.7	64.0	35.4	26.5	20.8	16.8	14.2	10.6	8.74	4.59
1.75V/cell	288.0	221.1	174.9	149.1	116.6	81.1	65.1	36.3	27.0	21.0	17.0	14.3	11.0	9.00	4.72
1.70V/cell	313.7	236.6	185.1	156.9	121.7	83.4	66.0	37.2	27.3	21.2	17.1	14.5	11.2	9.17	4.81
1.67V/cell	339.4	252.0	195.4	164.6	123.4	85.7	66.9	38.1	27.7	21.5	17.3	14.7	11.4	9.35	4.89
1.60V/cell	365.1	264.4	205.7	167.1	126.9	88.0	68.6	38.9	28.0	21.7	17.5	14.9	11.6	9.52	5.03

Constant Power Discharge (Watts/cell) at 20°C (68°F)															
F.V/Time	5min	10min	15min	20min	30min	45min	1h	2h	3h	4h	5h	6h	8h	10h	20h
1.85V/cell	446.3	347.5	293.6	262.2	202.1	163.0	124.0	71.4	52.2	39.6	33.4	28.3	21.4	17.8	9.31
1.80V/cell	470.7	374.2	310.2	274.4	208.9	166.0	124.9	72.8	52.7	40.0	33.7	28.6	21.7	18.1	9.50
1.75V/cell	529.1	402.4	326.2	292.0	220.7	170.0	128.6	74.2	53.7	40.3	34.0	28.6	22.0	18.3	9.64
1.70V/cell	583.0	429.8	341.7	299.1	226.6	171.6	130.0	74.8	54.1	40.7	34.2	28.9	22.4	18.5	9.71
1.67V/cell	626.5	459.6	358.6	301.4	228.0	173.4	131.0	75.4	54.4	41.3	34.6	29.4	22.6	18.7	9.90
1.60V/cell	672.3	480.0	371.2	303.7	229.8	175.4	132.1	75.7	54.7	41.3	34.6	29.7	23.0	18.8	10.0

APPLICATIONS

- UPS
- Hospitals and Testing Laboratories
- Emergency Power Supply
- Electric starting
- Telecommunications
- Data Centers

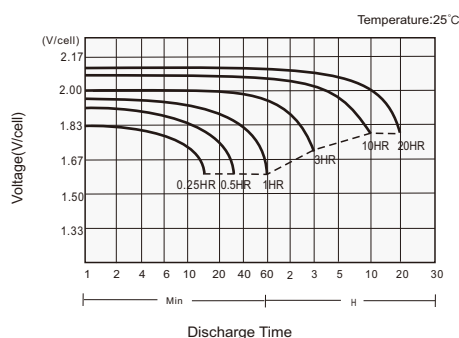
GENERAL FEATURES

- > 12 years design life (25°C)
- Excellent high current performance - optimised for short discharge time
- Advanced AGM technology for superior high-rate power
- Long Life Alloy - minimizing grid growth, reducing gassing and extending battery life
- Epoxy-sealed posts eliminate leaks
- Optimal energy density - saves floor space
- Pure Lead

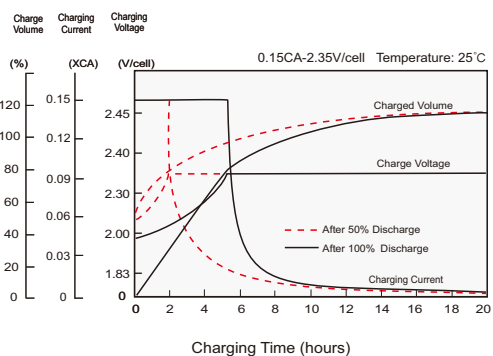
STANDARDS

- Compliance with IEC 60896 standards
- Classified as "Very Long Life" according to Eurobat
- CE,UL Approved
- Manufactured in Leoch®IATF16949, ISO 45001,ISO 9001 and ISO 14001 certified production facilities

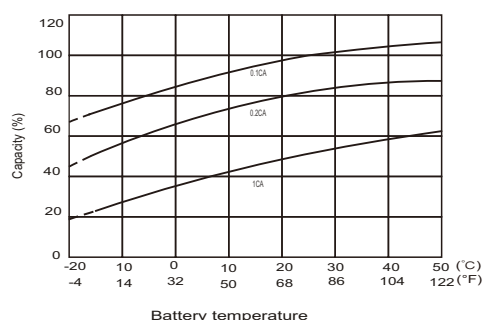
Discharge Characteristics



Charging Characteristics



Effects of Temperature on Capacity



Self Discharge Characteristics

