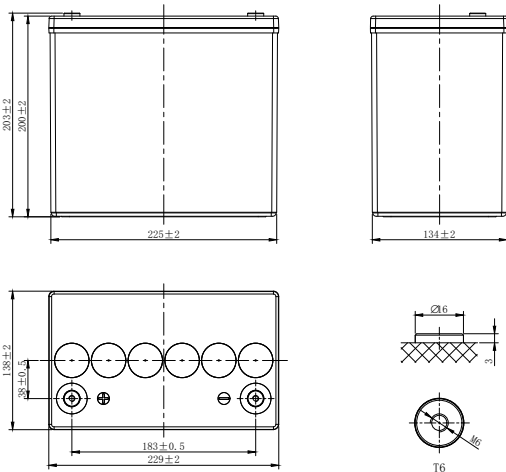


HXP SERIES-ULTRA HIGH RATE

HXP12-210 (12V210W)



CHARACTERISTICS

Item	Specifications	
Rated Voltage	12V	
Nominal Rate (25°C)	$W_{15}, 1.67V/cell$	220.6W/cell
Nominal Capacity (25°C)	$C_{10}, 1.80V/cell$	50Ah
Dimension	Length	229mm (9.02inches)
	Width	138mm (5.43inches)
	Container Height	200mm (7.87inches)
	Total Height	203mm (7.99inches)
Approx Weight	16.9kg (37.3lbs)	
Terminal	T6(M6)	
Container Material	ABS (UL94 HB or V-0 optional)	
Short-circuit current	1100.0A	
Internal Resistance (25°C)	Approx 5.8 mΩ (Fully charged)	
Operating Temp. Range	Discharge	-15~50°C (5~122°F)
	Charge	-20~40°C (-4~104°F)
	Storage	-15~40°C (5~104°F)
Nominal Operating Temp. Range	25±3°C (77±5°F)	
Max.Charging Current (25°C)	0.25C	
Charge voltage (25°C)	Standby Use	Equalization Use
	2.25-2.30V/cell	2.30-2.40V/cell
Temp. Coefficient	-3mV/cell/°C	-4mV/cell/°C
	40°C (104°F)	106%
Effect of temp. to Capacity	25°C (77°F)	100%
	0°C (32°F)	86%
	Self Discharge	≤3% per month at 25°C (77°F)

DISCHARGE TABLE

Constant Current Discharge (Amperes) at 25°C (77°F)															
F.V/Time	5min	10min	15min	20min	30min	45min	1h	2h	3h	4h	5h	6h	8h	10h	20h
1.85V/cell	149.6	115.3	90.8	78.7	60.4	42.8	39.0	20.3	13.6	10.3	8.70	7.40	5.90	4.90	2.51
1.80V/cell	164.5	124.4	98.0	83.7	63.5	44.1	40.0	20.5	13.7	10.7	8.90	7.60	6.00	5.00	2.61
1.75V/cell	195.5	139.5	108.0	89.6	67.4	45.5	41.0	21.0	14.2	10.9	9.10	7.70	6.10	5.10	2.67
1.70V/cell	214.5	149.4	114.9	96.6	69.5	46.7	42.0	21.5	14.5	11.1	9.30	7.90	6.30	5.20	2.72
1.67V/cell	233.7	159.3	119.8	97.7	71.5	48.0	43.0	22.0	14.9	11.3	9.50	8.10	6.40	5.30	2.77
1.60V/cell	249.8	166.4	125.9	99.6	72.4	49.3	43.5	22.3	15.0	11.6	9.60	8.30	6.60	5.40	2.84

Constant Power Discharge (Watts/cell) at 25°C (77°F)															
F.V/Time	5min	10min	15min	20min	30min	45min	1h	2h	3h	4h	5h	6h	8h	10h	20h
1.85V/cell	286.9	239.9	195.2	157.3	112.7	83.7	75.5	37.8	25.9	20.2	17.4	15.1	12.0	10.1	5.19
1.80V/cell	319.6	250.3	200.6	165.6	118.5	86.5	75.7	38.4	26.6	20.4	17.9	15.2	12.1	10.2	5.38
1.75V/cell	385.9	270.0	209.7	176.5	126.0	89.3	76.7	38.8	27.2	20.9	18.2	15.4	12.3	10.4	5.49
1.70V/cell	412.5	280.9	218.5	182.3	130.4	92.0	77.6	39.3	27.5	21.1	19.1	16.1	12.5	10.5	5.57
1.67V/cell	431.6	290.8	220.6	183.7	133.2	95.2	78.9	39.9	27.9	21.6	19.2	16.4	12.7	10.7	5.64
1.60V/cell	448.0	296.6	227.7	187.6	135.2	96.6	79.3	40.1	27.7	21.7	19.3	16.5	13.0	10.8	5.73

Constant Current Discharge (Amperes) at 20°C (68°F)															
F.V/Time	5min	10min	15min	20min	30min	45min	1h	2h	3h	4h	5h	6h	8h	10h	20h
1.85V/cell	142.5	109.8	86.5	75.0	57.5	40.8	37.1	19.7	13.2	10.0	8.45	7.18	5.73	4.76	2.44
1.80V/cell	156.7	118.5	93.3	79.7	60.5	42.0	38.1	19.9	13.3	10.4	8.64	7.38	5.83	4.85	2.53
1.75V/cell	186.2	132.9	102.9	85.3	64.2	43.3	39.0	20.4	13.8	10.6	8.83	7.48	5.92	4.95	2.59
1.70V/cell	204.3	142.3	109.4	92.0	66.2	44.5	40.0	20.9	14.1	10.8	9.03	7.67	6.12	5.05	2.64
1.67V/cell	222.6	151.7	114.1	93.0	68.1	45.7	41.0	21.4	14.5	11.0	9.22	7.86	6.21	5.15	2.69
1.60V/cell	237.9	158.5	119.9	94.9	69.0	47.0	41.4	21.7	14.6	11.3	9.32	8.06	6.41	5.24	2.76

Constant Power Discharge (Watts/cell) at 20°C (68°F)															
F.V/Time	5min	10min	15min	20min	30min	45min	1h	2h	3h	4h	5h	6h	8h	10h	20h
1.85V/cell	273.2	228.5	185.9	149.8	107.3	79.7	71.9	36.7	25.1	19.6	16.9	14.7	11.7	9.81	5.04
1.80V/cell	304.4	238.4	191.0	157.7	112.9	82.4	72.1	37.3	25.8	19.8	17.4	14.8	11.7	9.90	5.22
1.75V/cell	367.5	257.1	199.7	168.1	120.0	85.0	73.0	37.7	26.4	20.3	17.7	15.0	11.9	10.1	5.33
1.70V/cell	392.9	267.5	208.1	173.6	124.2	87.6	73.9	38.2	26.7	20.5	18.5	15.6	12.1	10.2	5.41
1.67V/cell	411.0	277.0	210.1	175.0	126.9	90.7	75.1	38.7	27.1	21.0	18.6	15.9	12.3	10.4	5.48
1.60V/cell	426.7	282.5	216.9	178.7	128.8	92.0	75.5	38.9	26.9	21.1	18.7	16.0	12.6	10.5	5.56

APPLICATIONS

- UPS
- Hospitals and Testing Laboratories
- Emergency Power Supply
- Electric starting
- Telecommunications
- Data Centers

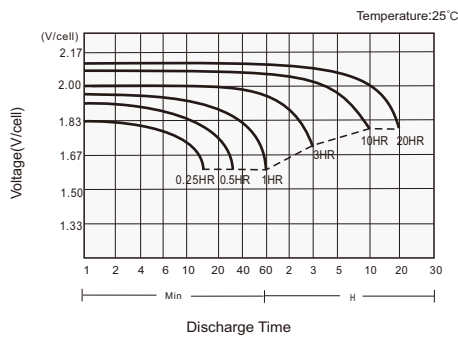
GENERAL FEATURES

- > 12 years design life (25°C)
- Excellent high current performance - optimised for short discharge time
- Advanced AGM technology for superior high-rate power
- Long Life Alloy - minimizing grid growth, reducing gassing and extending battery life
- Epoxy-sealed posts eliminate leaks
- Optimal energy density - saves floor space
- Pure Lead

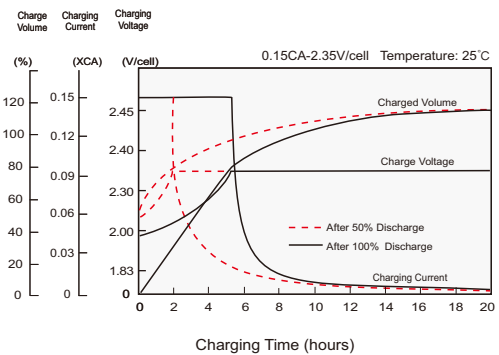
STANDARDS

- Compliance with IEC 60896 standards
- Classified as "Very Long Life" according to Eurobat
- CE,UL Approved
- Manufactured in Leoch®IATF16949, ISO 45001,ISO 9001 and ISO 14001 certified production facilities

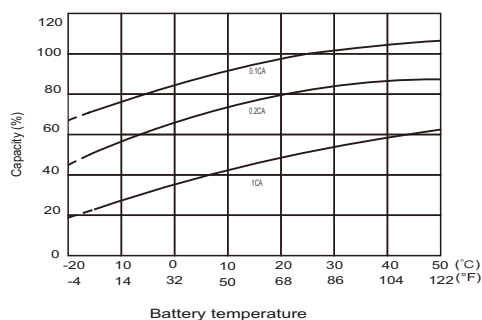
Discharge Characteristics



Charging Characteristics



Effects of Temperature on Capacity



Self Discharge Characteristics

